

# OCEANIC LUXURY APARTMENTS



Rojales / Alicante / Costa Blanca / Spain



Representación artística sujeta a posibles cambios sin valor contractual



### Oceanic Luxury Apartments

The unique and sustainable properties of “Oceanic Luxury Apartments” are designed to fully enjoy the magnificent views towards the skyline of Guardamar. A combination of sea views, nature and a luxurious lifestyle within walking distance of Quesada and Rojales with all the amenities at hand.

Sustainable design, high quality finishes and the unique location distinguish the apartments of Oceanic Luxury Apartments as one of the best of the Costa Blanca.

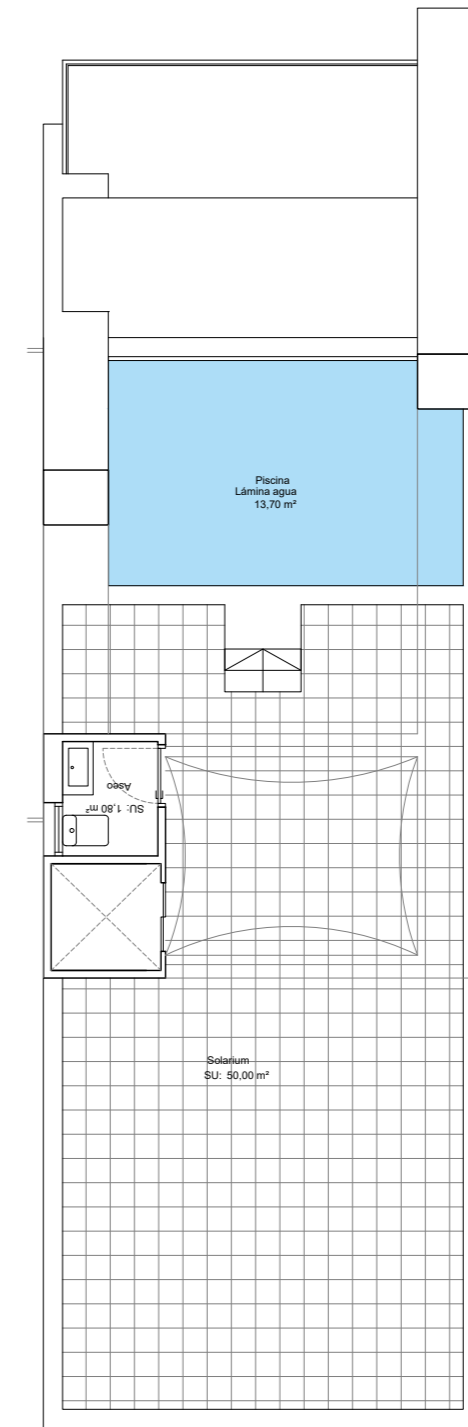
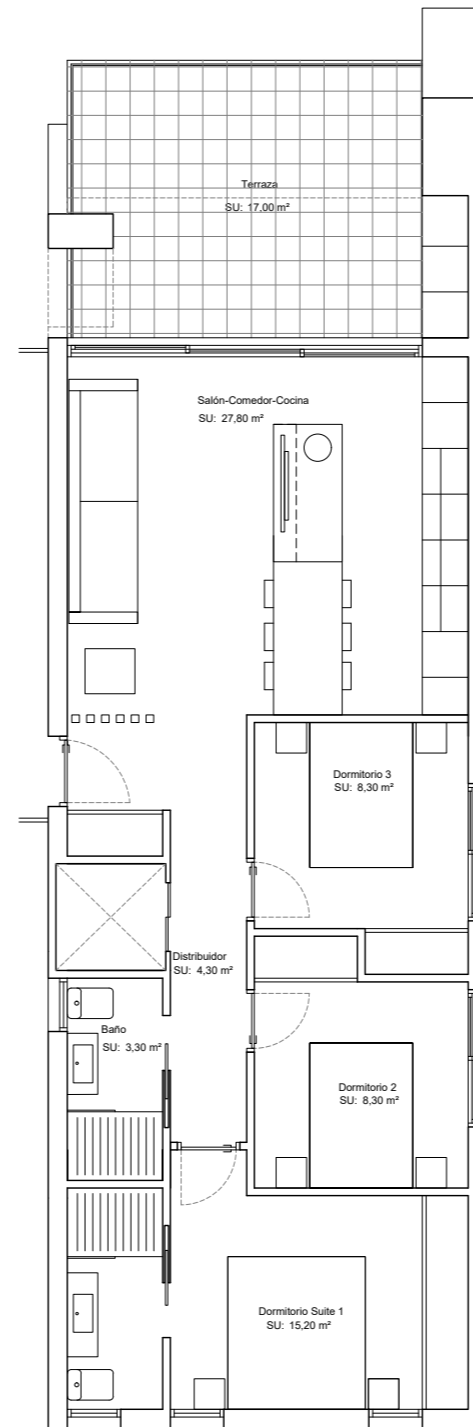
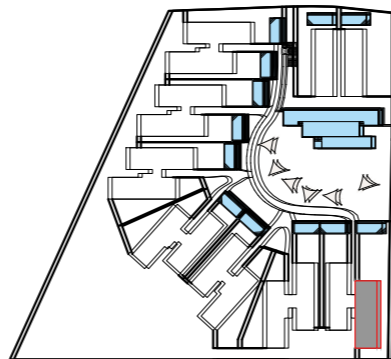
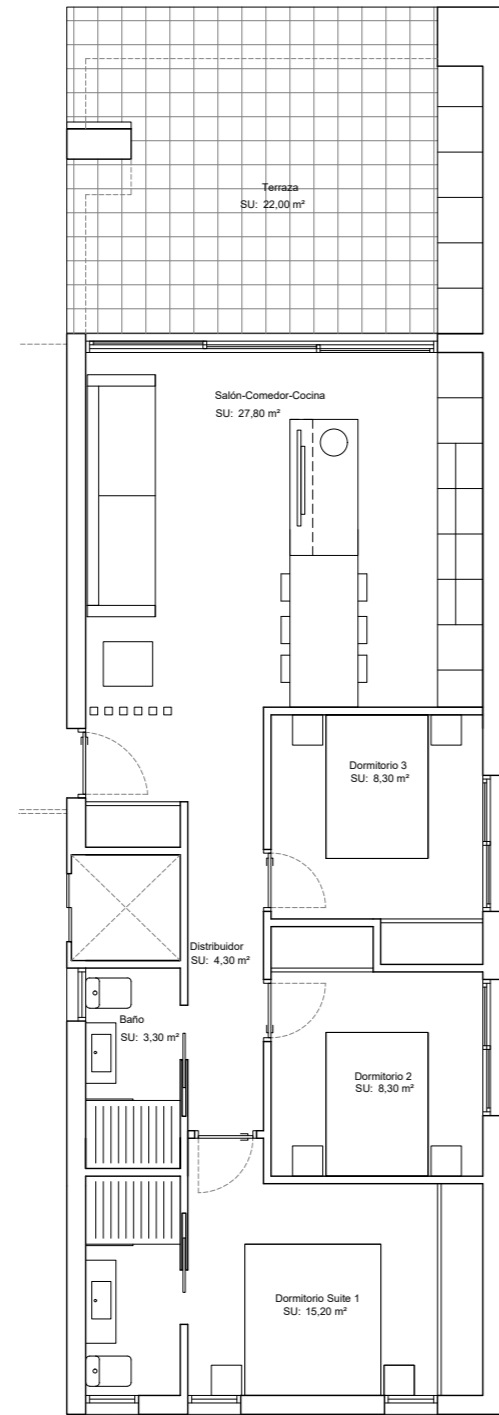
Several models available, to choose between ground floor with plot or first floor with solarium and elevator. All with 3 bedrooms, 2 til 3.5 bathrooms (1 of them en suite), open kitchen with living room and terrace. Optional pool for both. Common areas include outdoor and indoor pool, gardens, GYM, barbecue, sauna, hammocks and much more.

The qualities will be similar as the residential Oceanic has.



Superficie construida ..... 82,00 m2  
 Terraza ..... 22,00 m2

<b>ANTEPROYECTO 30 APARTAMENTOS</b>	MODELO
<b>DISTRIBUCIÓN PLANTA BAJA</b>	<b>1A</b>



Representación artística sujeta a posibles cambios sin valor contractual

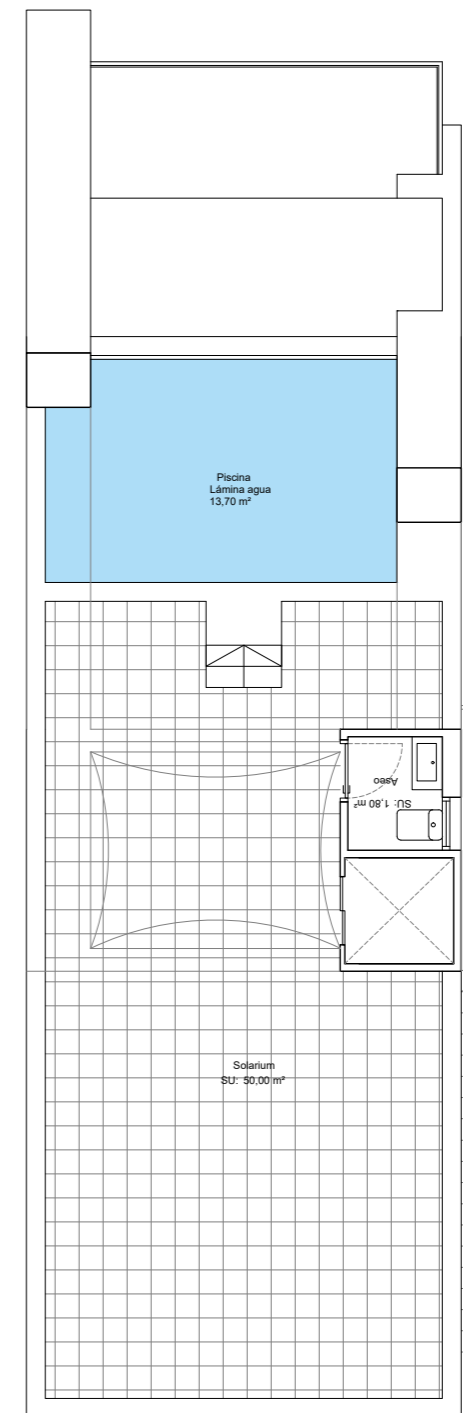
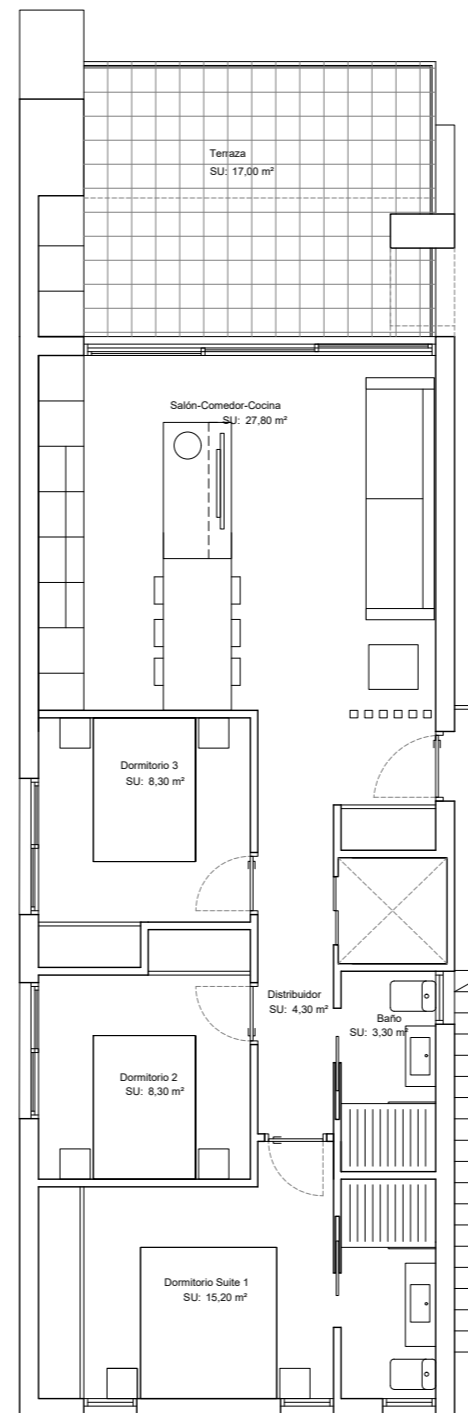
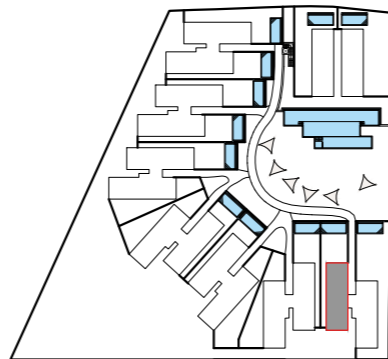
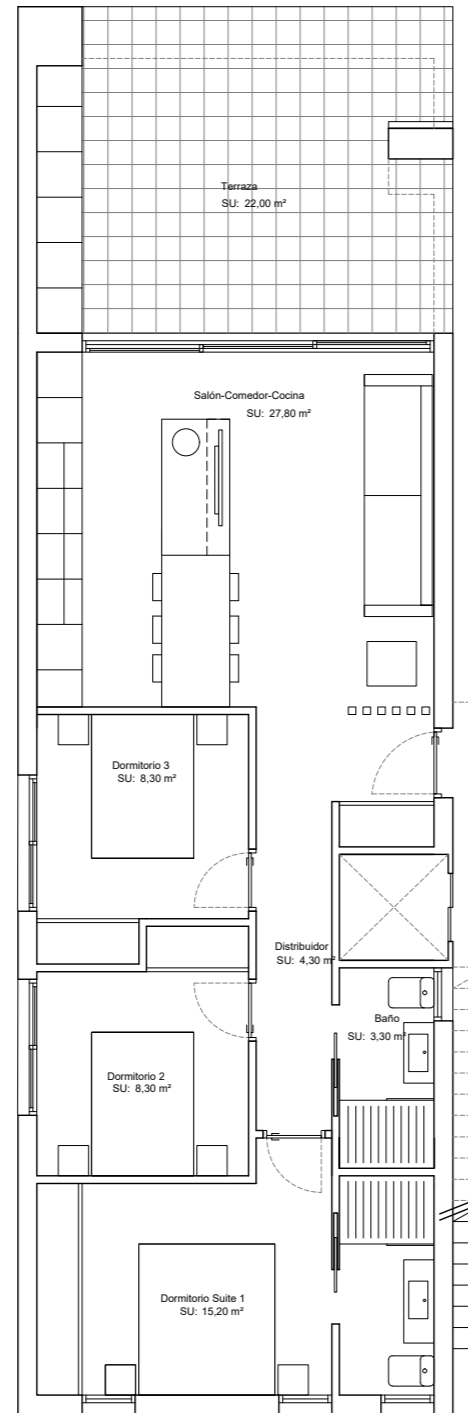
Superficie construida ..... 82,00 m2  
 Terraza ..... 17,00 m2  
 Solarium ..... 50,00 m2  
 Piscina ..... 13,70 m2

<b>ANTEPROYECTO 30 APARTAMENTOS</b>	MODELO
<b>DISTRIBUCIÓN PLANTA PRIMERA</b>	<b>1B</b>



Superficie construida ..... 82,00 m2  
 Terraza ..... 22,00 m2

<b>ANTEPROYECTO 30 APARTAMENTOS</b>	MODELO
DISTRIBUCIÓN PLANTA BAJA	<b>2A</b>



Representación artística sujeta a posibles cambios sin valor contractual

Superficie construida ..... 82,00 m2  
 Terraza ..... 17,00 m2  
 Solarium ..... 50,00 m2  
 Piscina ..... 13,70 m2

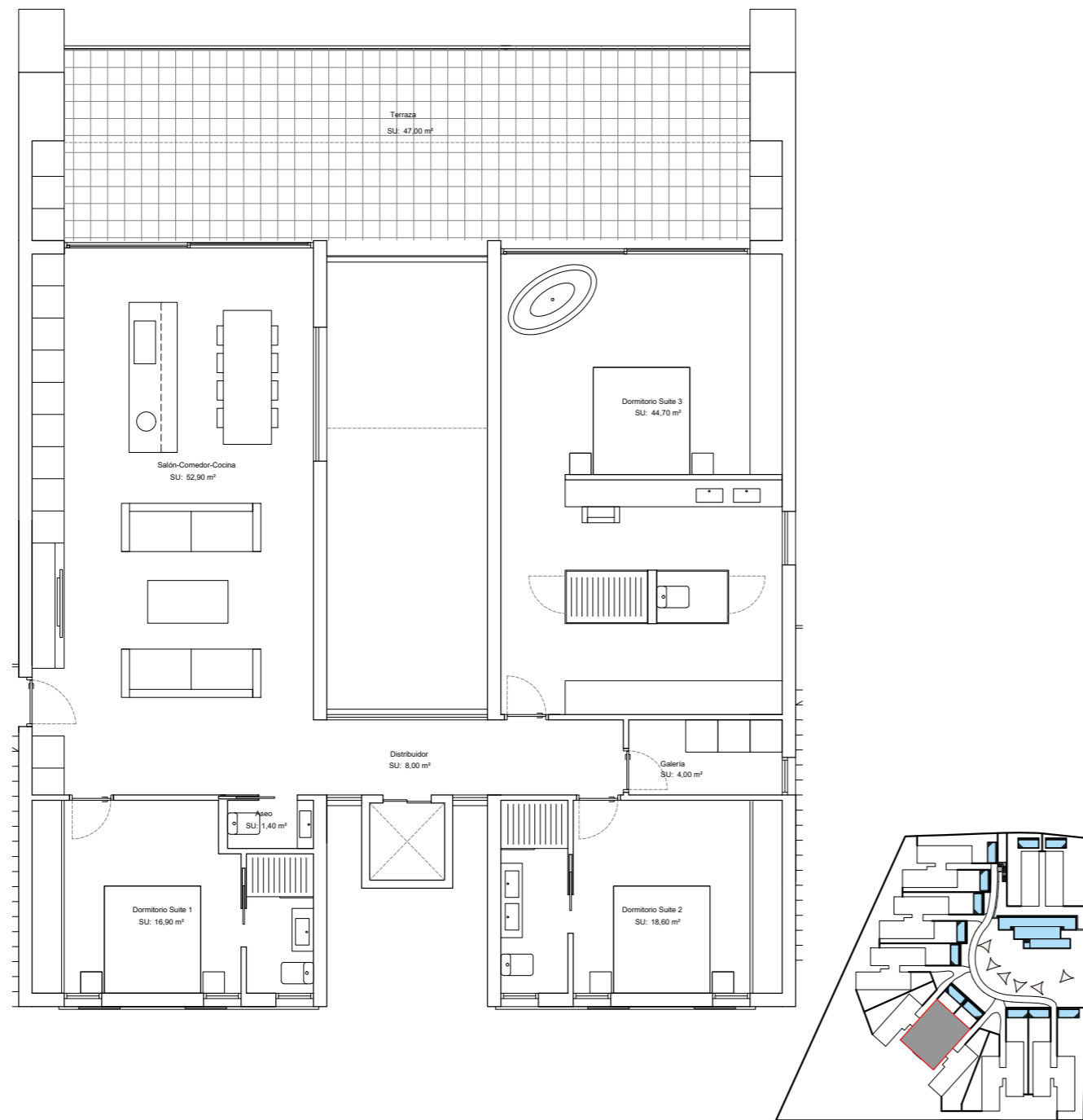
<b>ANTEPROYECTO 30 APARTAMENTOS</b>	MODELO
DISTRIBUCIÓN PLANTA PRIMERA	<b>2B</b>





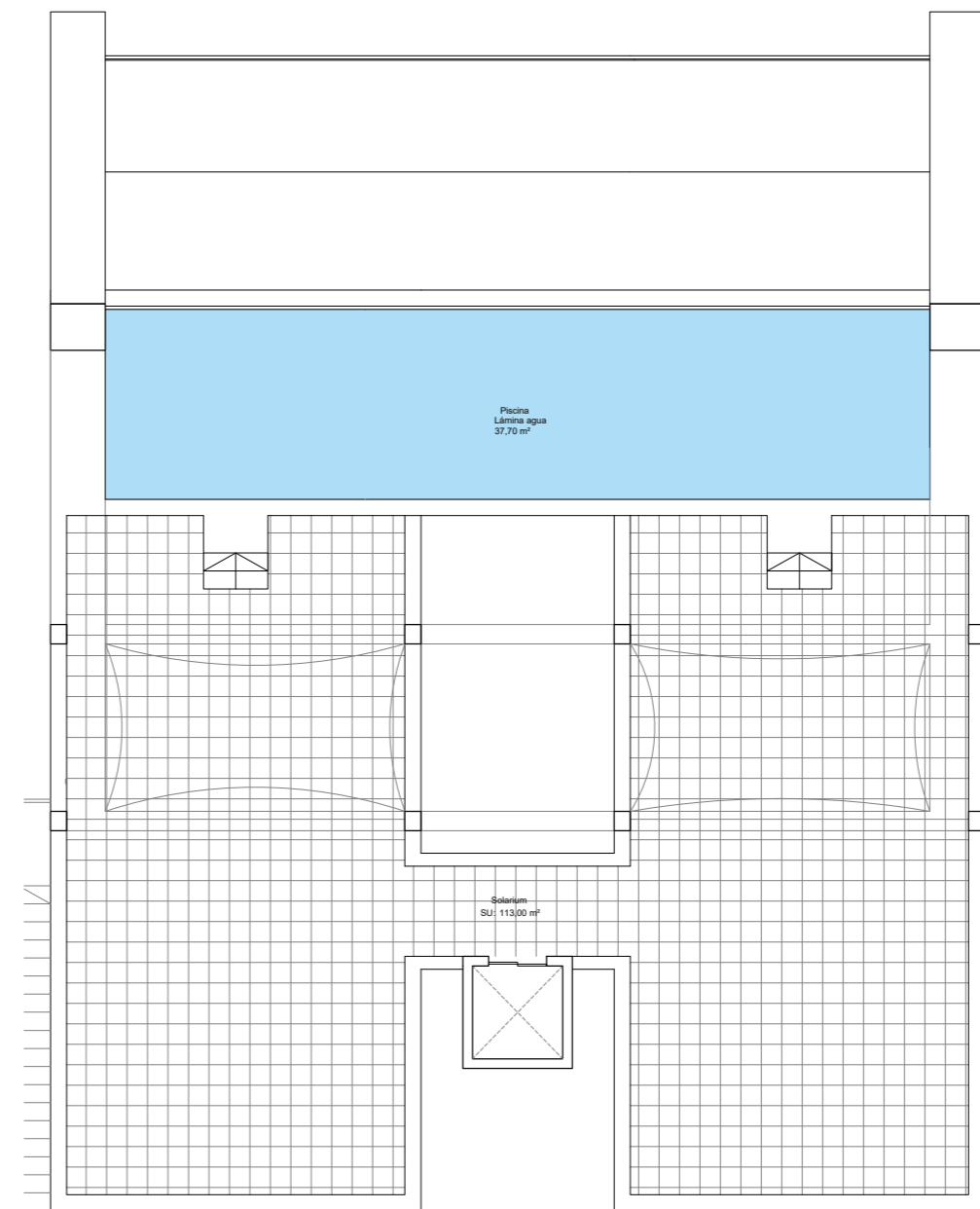
Superficie construida ..... 170,00 m2  
 Terraza ..... 47,00 m2  
 Solarium ..... 113,00 m2  
 Piscina ..... 37,70 m2

<b>ANTEPROYECTO 30 APARTAMENTOS</b>	MODELO
<b>DISTRIBUCIÓN PLANTA PRIMERA</b>	<b>7B</b>



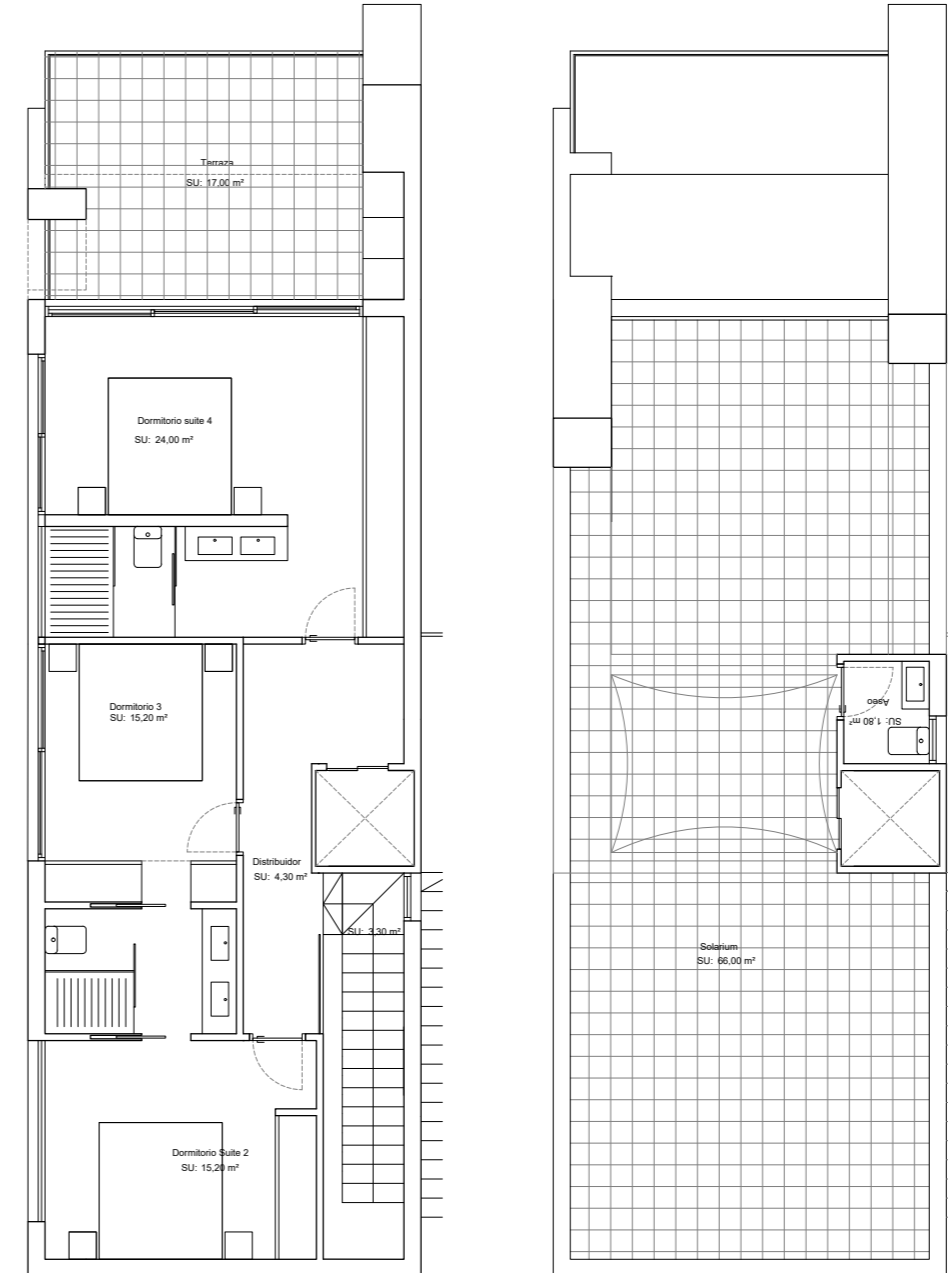
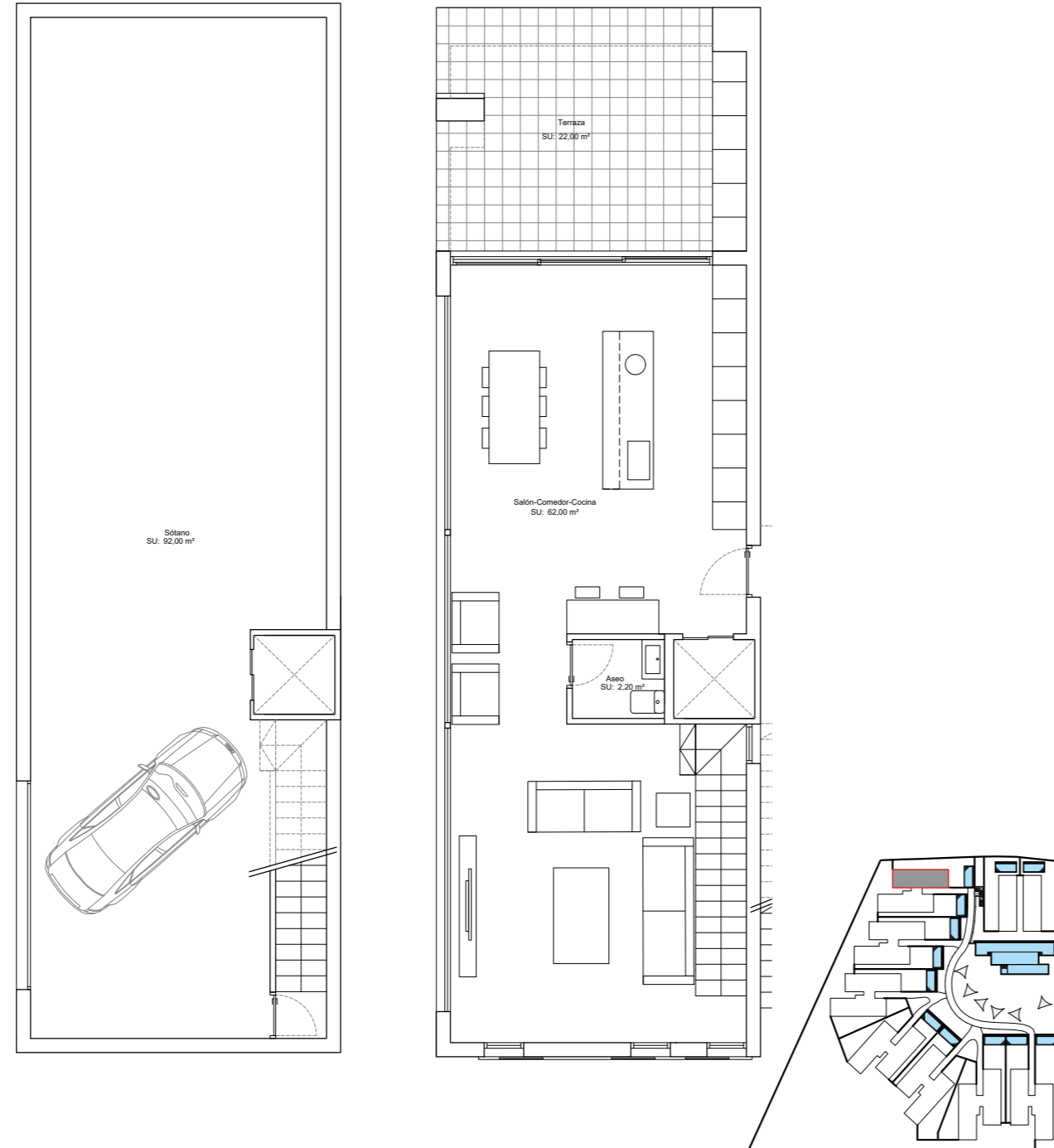
Superficie construida ..... 170,00 m2  
 Terraza ..... 47,00 m2  
 Solarium ..... 113,00 m2  
 Piscina ..... 37,70 m2

<b>ANTEPROYECTO 30 APARTAMENTOS</b>	MODELO
<b>DISTRIBUCIÓN PLANTA SOLARIUM</b>	<b>7B</b>



Superficie construida vivienda ..... 164,00 m2  
 Superficie construida sótano ..... 107,00 m2  
 Terraza ..... 39,00 m2  
 Solarium ..... 66,00 m2

<b>ANTEPROYECTO 30 APARTAMENTOS</b>	MODELO
DISTRIBUCIÓN P. 1 Y SOLARIUM	<b>14</b>



Superficie construida vivienda ..... 164,00 m2  
 Superficie construida sótano ..... 107,00 m2  
 Terraza ..... 39,00 m2  
 Solarium ..... 66,00 m2

<b>ANTEPROYECTO 30 APARTAMENTOS</b>	MODELO
DISTRIBUCIÓN P. 1 Y SOLARIUM	<b>14</b>



Plot 1-5 / 8-13



Plots 6-7



Plot 14



precios y dimensiones sujetos a posibles cambios sin valor contractual

# Residential complex

